

SERIES 1200 SELF CLEANING GRAVITY SCREEN FILTER



FLOW-GUARD
 Filtration Products

Self Cleaning Gravity Screen Filter

Self-Cleaning Gravity Screen Filter

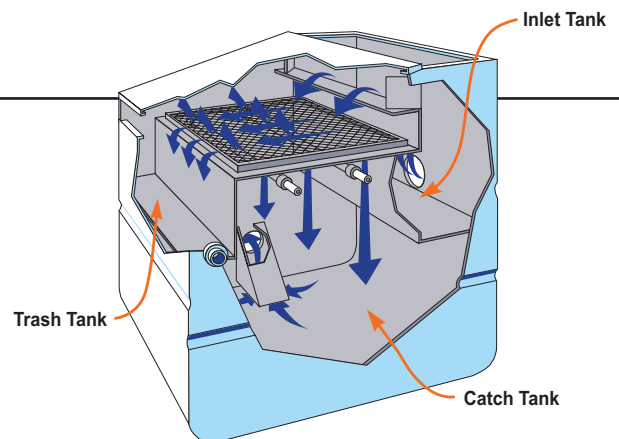
Flow-Guard Stainless Self-Cleaning (SSC) filters are designed to meet the demands for clean, particle-free water. This is an essential requirement in keeping today's low volume irrigation systems operating properly. The gravity flow design eliminates the need to pump water into the filter. This energy savings translates into lower operating costs.

Because of the efficient design of the SSC filter, contaminants are continuously removed from the water without the need for backflushing. The screen is kept clean automatically by the system of rotating cleaning jets. Standard screen is 150 mesh. Other mesh sizes are available.

- Low Initial Cost; Low Operating Cost
- Simple, Trouble-free Design
- Savings of Backflush Water
- Reliable Performance
- Durable, Yet Lightweight
- Flow rates from 350 to 2000 GPM
- Energy Savings

OPERATION

1. Backflush water enters recycle tank.
2. Contaminants collect on the screen as clean water passes into the tank.
3. Contaminants are forced to the front of the screen by:
 - a. Horizontal flow of water over the screen.
 - b. Rotating cleaning jets that spray water through the screen from below.
4. Contaminants accumulate in the trash-tank where, periodically they are removed.
5. Filtered water flows into the catch-tank.



6. Filtered water is pumped back to the inlet manifold of the media tank system to be used effectively for irrigation.

APPLICATIONS

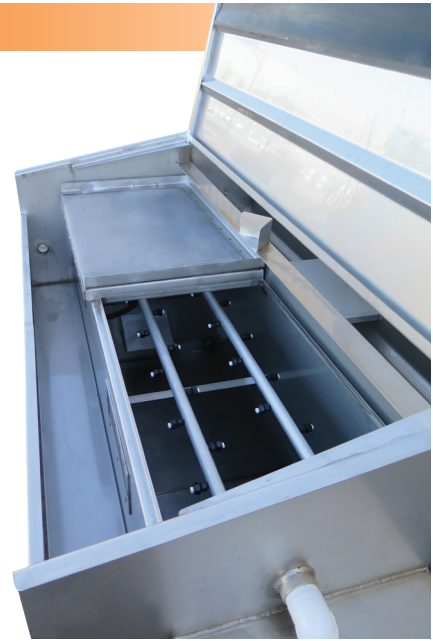
Typical SSC Self-Cleaning Filter Applications

Gravity Flow Systems: SSC filters are designed for use on gravity flow water sources for low volume irrigation systems.

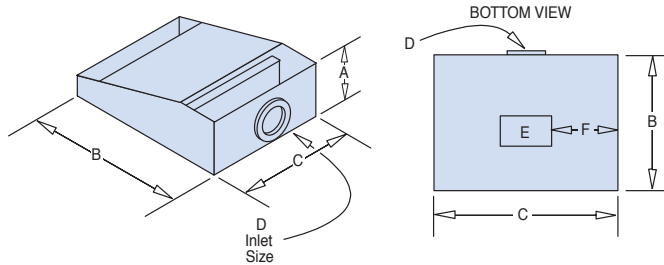
Primary Filter: SSC filters can be utilized as a primary filter for most irrigation water sources used in conjunction with low-volume irrigation systems.

Pre-Filter: In many cases, an SSC Filter is used as a pre-filter for media filters, resulting in a savings of up to 90% of backwash water.

Industrial: To filter out large volumes of debris for water recycling or to meet environmental water discharge standards. The SSC Filter can be used in many applications such as packing houses, aquatic farming, cooling towers and processing plants.

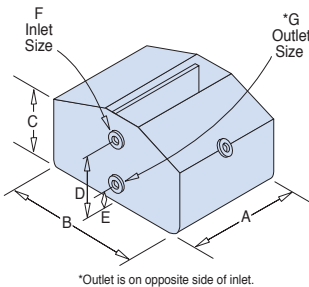
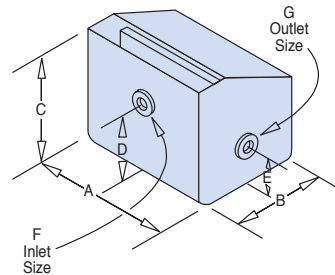


SPECIFICATIONS



Model No.	Dimensions (Inches)						Cap. (GPM)
	A	B	C	D	E	F	
SSC 48	17	42	48	6	12x12	18	350
SSC 72	17	42	72	8	10x20	26	550
SSC 96	17	42	96	10	10x20	38	750

Model No.	Dimensions (Inches)							Cap. (GPM)
	A	B	C	D	E	F	G	
SSC 48-100	48	42	46	24.5	9	6	4	350
SSC 72-100	72	42	46	23.5	9	8	6	550
SSC 96-100	96	42	46	22.5	9	10	8	750



Model No.	Dimensions (Inches)							Cap. (GPM)
	A	B	C	D	E	F	G	
SSC 272-100	72	78	46	23	8.25	10	8	1000
SSC 296-100	96	78	46	24	8.25	12	10	1400
SSC 2144-100	144	78	46	24	8.25	12	12	2000

Notes:
Do not exceed recommended flow rates; in cases of extremely dirty water, lower flow rates are recommended. At least 30 psi is needed at the hydraulic motor for proper cleaning. Consult the manufacturer where available pressures are less than 30 psi. Allow at least an additional 5% flow consumption when calculating pumping requirements. All inlet/outlet connections are grooved. Standard screen material is 150 mesh. Other mesh sizes available. Consult manufacturer for recommendation regarding silty conditions prior to purchase.



Valves & Castings, Inc.
Specifications subject to change without notice.

Fresno Valves & Castings, Inc.
7736 East Springfield Avenue
P.O. Box 40, Selma, CA 93662, U.S.A.
(800) 333-1658
www.fresnovalves.com